

Our Commitments

SGTL is part of the Welsh Power Group. We pride ourselves on operating responsibly and being good neighbours in all that we do. This page outlines our commitment to local farmers, safety and the environment

Our Commitment to Landowners and Occupiers

SGTL will negotiate a permanent easement for the pipeline from each landowner. Under the provisions of these easement agreements SGTL will have the right to construct, inspect and maintain the pipeline. The agreements will include a letter of undertakings detailing procedures for the construction and operation of the pipeline and the reinstatement of agricultural land. SGTL is committed to ensuring that we:

- Take all reasonable precautions to avoid obstruction to, or interference with, the users of the land;
- Take all reasonable precautions to prevent or minimise damage;
- Make good all loss or damage in an agreed manner, or failing this, pay reasonable compensation;
- Return the land, as far as reasonably practicable, to its original condition;
- Indemnify the owners and occupiers against actions or claims arising from the construction and operation of the pipeline.

Our Commitment to Safety

SGTL is committed to maintaining high standards of safety and will conduct our operations in a way that protects the public at all times. We will meet, and where appropriate, exceed the requirements of health and safety legislation, policies and other commitments to which we subscribe.

Our Commitment to the Environment

SGTL is committed to the protection of the environment and will employ every possible measure to reduce our environmental impact. The proposed route crosses an area of considerable nature conservation interest and SGTL will work with the relevant statutory authorities, and other stakeholders, to ensure we take all reasonable steps to conserve and enhance this important environment.



Farming on the Gwent Levels.



Marshfield to Uskmouth

Gas Supply Pipeline
Newport, South Wales

For further Information

Severn Gas Transportation Ltd, West Nash Road, Nash, Newport, Gwent NP18 2BZ

By Phone: **+44 (0) 1633 292700**

By Fax: **+44 (0) 1633 292701**

By e-mail: **info@severnpower.com**

*Severn Gas Transportation Ltd is a private company owned by the Welsh Power Group, a multi-asset European energy business. Welsh Power Group also owns Severn Power Ltd. For more information on Welsh Power Group, visit the company website at www.welshpower.com

November 2007



Introduction

Welsh Power Ltd is proposing to build an 850MegaWatt power station near Newport in South Wales, referred to as Severn Power. This Combined Cycle Gas Turbine power station will feed into the UK National Grid, helping to safeguard electricity supplies in a region where demand is increasing.

The Severn Power station will be built on the site of the demolished Uskmouth A coal-fired power station and next to the existing Uskmouth Power Plant (B) on the banks of the River Usk. This location has been used for power generation for 50 years.

In order to provide a gas supply to the Severn Power station, it is necessary to construct a new section of high pressure gas pipeline, approximately 6km in length. The pipeline will be referred to as the Marshfield to Uskmouth pipeline and will be installed between a new Above Ground Installation (AGI) at Marshfield and the Severn Power station.

Severn Gas Transportation Ltd (SGTL) is a licensed gas transporter and will be responsible for the construction and operation of the Marshfield to Uskmouth pipeline. The pipeline will be constructed from welded steel pipe and will be buried up to 30m below the surface for its entire length. It will have an external diameter of 450mm / 18 in.



The Gwent Levels.

Project Overview



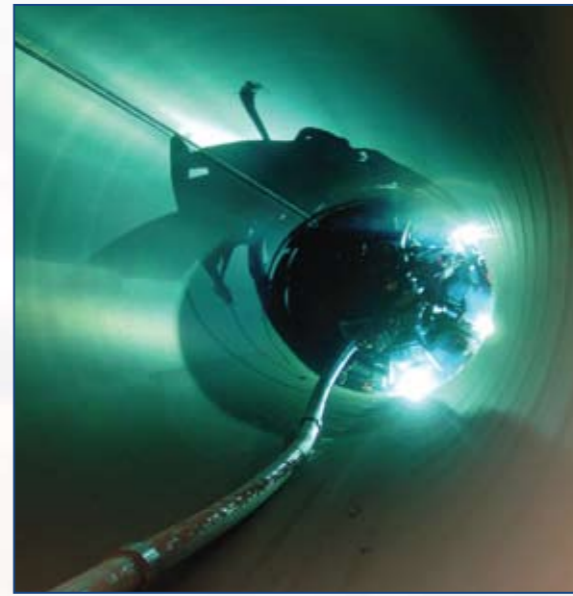
Drilling Site for a HDD Operation.

Programme

Pipeline construction is planned for spring / summer 2009. Reinstatement will be carried out as soon as possible on completion of construction. It is anticipated that the pipeline will be completed, tested and commissioned, ready to bring into operation for autumn 2009.

Construction

The pipe will be installed using a technique known as Horizontal Directional Drilling (HDD). HDD involves drilling a small diameter bore from entry to exit points. The direction of the drill head is controlled from the surface using electromagnetic detection equipment. The hole is then enlarged to the required diameter and the pipe is pulled into place. Four separate drilling operations will be undertaken, each of approximately 1500m in length. During construction, four temporary work sites will be established along the route for the drilling rig and associated equipment.



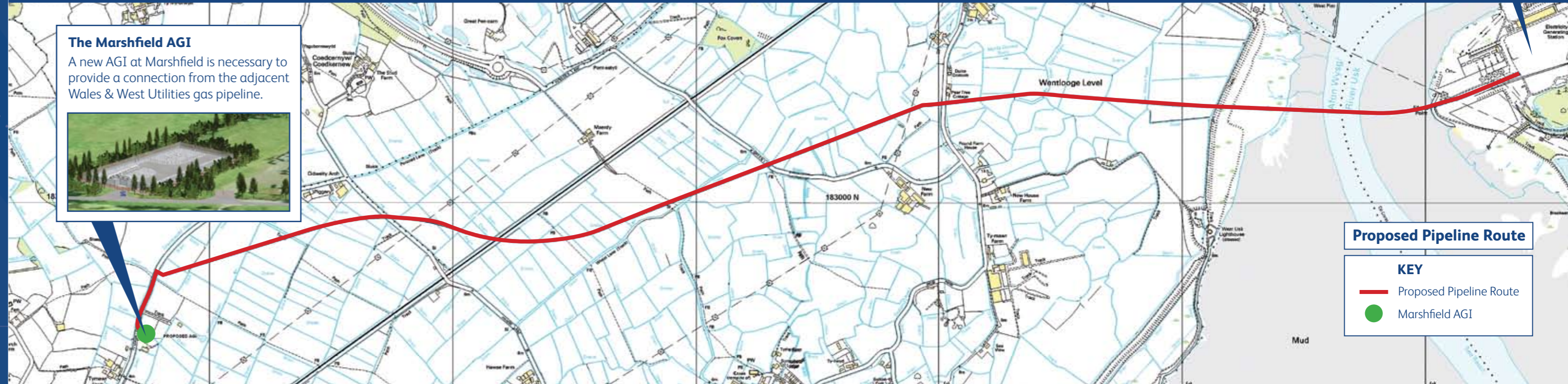
Typical Pipeline Welding

HDD is considered a non-intrusive technique because the bulk of work takes place below ground. It has been chosen in order to minimise disruption to farming activities and prevent disturbance of important local wildlife habitats. The majority of the route will be unaffected by any surface works during construction and farming operations can continue as normal.

Following the completion of construction works, disturbed land will be fully reinstated. Hedgerows will be replanted, and fences re-erected taking into account local styles and materials. Normal farming operations can be resumed as soon as reinstatement has been completed.



The Proposed Severn Power Station



The Marshfield AGI
A new AGI at Marshfield is necessary to provide a connection from the adjacent Wales & West Utilities gas pipeline.



Proposed Pipeline Route

- KEY**
- Proposed Pipeline Route
 - Marshfield AGI